

# IT operational efficiency starts with 100% visibility

When nothing less than total visibility of the IT estate will do, you need Centennial Discovery to dynamically track all hardware and software deployed across the organization.

Whether the aim is to take control of software licensing, drive down IT costs or ensure that projects are brought in on time and under budget, Discovery provides a baseline of dynamically-updated asset information across the entire network.

From the minute you deploy the first client agent, Discovery's patent-pending technology goes to work immediately, providing you with a complete picture of all the hardware and software on the network – regardless of location or platform.

## Why Centennial Discovery?

No other IT audit solution offers the breadth and depth of auditing features required to maintain full visibility and control of the network:

**100% visibility** – discover all IP-addressable hardware on the network, including PCs, servers, switches, network printers and other devices.

**Network visualization** – graphically map the network to understand the distribution and dependency of IT assets.

**Dynamic** – know about changes to the network as they happen, without waiting for scheduled audits.

**Multi-platform** – track hardware and software across all major enterprise platforms, including Windows, Linux, Unix, Mac OSX and AIX.

**Remote auditing** – keep tabs on all IT assets anywhere in the organization, whether in an office or remotely-connected to the network.

**Collaboration** – share asset information with multiple colleagues and create personalized web-based views of key reports.

## Latest Features in Centennial Discovery:

**Vista Migration Planning** – new reports provide critical information required to properly plan and budget for Vista migration

**Enhanced 'What If' Planning Tools** – create template-based queries to help with project planning and budgeting

**Full Integration with Centennial License Manager** – automatically populate license management interface with software audit and usage information

**Windows CE Support** – accurately audit the hardware and software configurations for smartphone and PDA devices

**New Discovery.Dashboard Reports** – graphically track software and hardware changes over time, plus get better visibility of client deployments.

# Discovery Features & Modules



## Discovery.Visual

Discovery.Visual helps IT staff, managers and executives fully visualize their IT estate by dynamically presenting all discovered IT assets in a graphical format. It is an ideal aid to scoping and tracking IT projects, as well as managing risks.

## Discovery.Portal

Centennial's unique software information portal helps SAM initiatives by providing the market name, publisher, summary and (where available) licensable status of tens of thousands of applications instantly into your Discovery Control Center. The portal can save managers hundreds of hours worth of "Googling" to understand what's on the network.

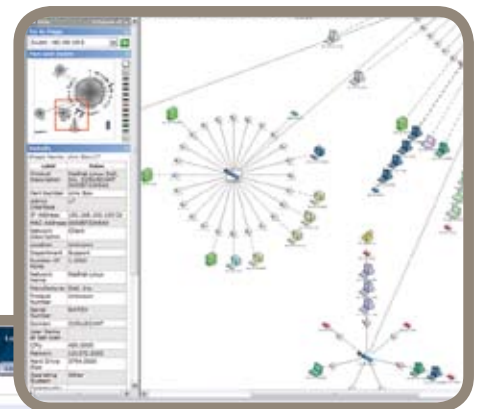
## Hardware & Software Audit

No other solution can match Centennial Discovery's breadth and depth of software audit and PC inventory capabilities. Centennial Discovery provides a full dynamic audit of all network devices, wherever they are located, providing you with the latest information on the configuration, usage and physical location of all your hardware and software.

## Security.Advisor

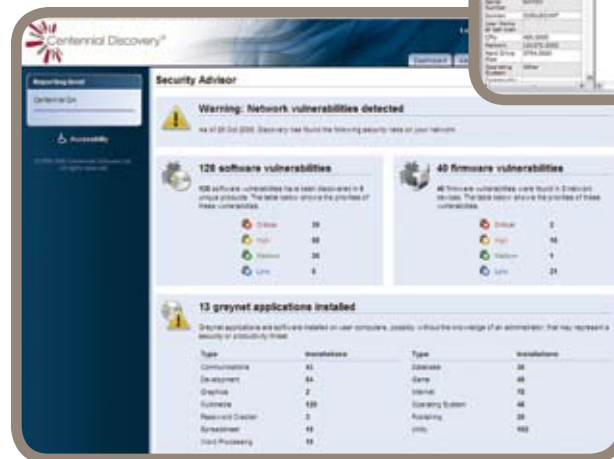
Understand when assets become liabilities by

dynamically discovering software and firmware vulnerabilities on the network with Security.Advisor. This latest addition to Discovery will also alert administrators to the presence of potentially-dangerous greynet applications on the network.



## Discovery.Dashboard

With more than 30 specialized web-based reports, plus a unique set of wizards to help plan and cost IT initiatives (such as Vista Migrations), Discovery.Dashboard offers each user the option to create their own home page, with a selection of graphs that best suit their job function - whether it is managing software license compliance, security, procurement or any other IT Governance function.



## Supported platforms\*

Windows	98SE, ME, NT4, XP, 2003, Vista, CE
Unix	RedHat 9 & ES2+, SUSE 9+, HP-UX 11i v1, IBM AIX 5L v5.3
Mac	OSX 10.3.9, 10.4.5 & 10.4.6 on PowerPC
Terminal Services	Windows 2000 & 2003, Citrix Metaframe

\* Visit website for a full list of supported platforms. Vista client